

SPECIFICATION SHEET : WH3-120-C

This Is An Original Product From Fulham Co., Inc

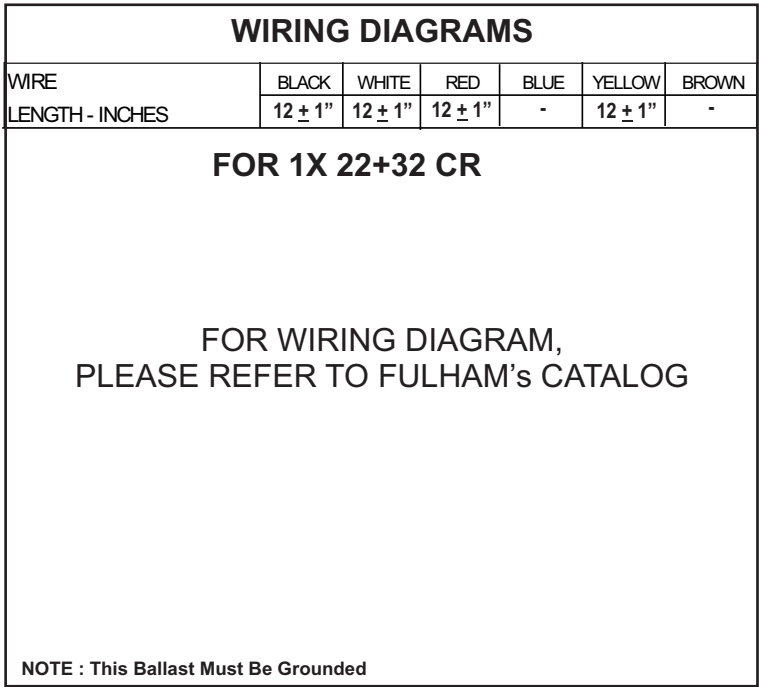
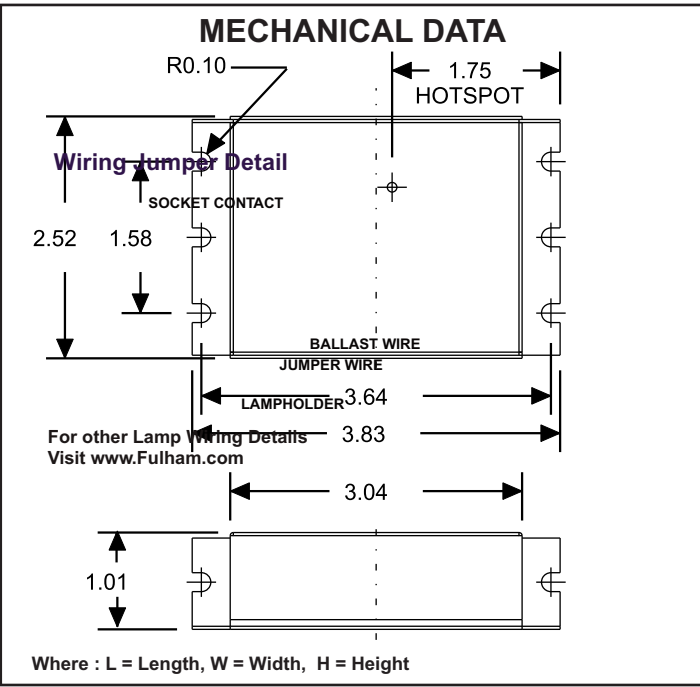
**Description : WorkHorse Series Versatile, Solid State Electronic Ballast.
High Power Factor, Light Weight.**

This Ballast Will Operate Following Lamps.

REFER TO LAMP WATTS/TYPE

ELECTRICAL DATA

INPUT VOLT: 120V ± 10%, 50/60Hz							
LAMP WATTS/TYPE	T5CR40W	CR32W	22+32 CR	F24T5	F54T5	* F15T8	* F15T8
LAMPS OPERATED	1					2	3
INPUT WATTS	36	28	36	25	56	28	40
LINE CURRENT:	0.33	0.25	0.32	0.23	0.50	0.25	0.35
POWER FACTOR	0.93	0.93	0.93	0.92	0.94	0.92	0.93
BALLAST FACTOR	0.87	0.79	0.68	1.02	0.99	1.13	0.90
EFFICACY FACTOR	2.38	2.83	1.91	4.06	1.77	4.06	2.27
THD	38%	39%	37%	41%	34%	39%	36%
EMI/RFI COMPLIANCE	FCC PART 18-A (Non-Consumer)						
SOUND RATING	" A "						
BALLAST TYPE	INSTANT START						
VOLTAGE TRANSIENTS	ANSI 62.41						
INPUT/PROTECTION	FUSE						
MIN. OPERATING TEMP	-30 °C (-20 °F)						
MAX. CASE TEMP	70 °C (158 °F)						
APPROVALS/CLASS	UL LISTED, CLASS " P ", 1 OR 2 OUTDOOR						



Fulham extends a limited warranty only to the original purchaser or to the first user for a period of 5 years from the date of manufacture when properly installed and operated under normal conditions of use. For complete terms and conditions, please reference the Fulham product catalog (www.fulham.com)
Due to a program of continuous improvement, Fulham reserves the right to make modifications or variations in design or construction to the equipment described. © Fulham Company Limited, All Rights Reserved.



This Is An Original Product From Fulham Co., Inc

**Description : WorkHorse Series Versatile, Solid State Electronic Ballast.
High Power Factor, Light Weight.**

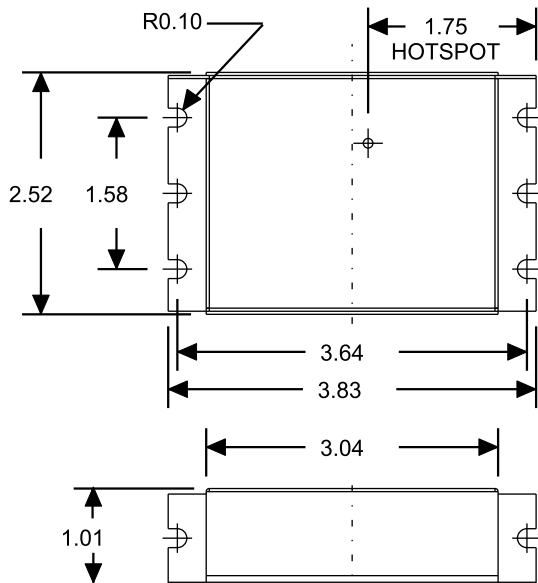
This Ballast Will Operate Following Lamps.

REFER TO LAMP WATTS/TYPE

ELECTRICAL DATA

INPUT VOLT: 120V ± 10%, 50/60Hz								
LAMP WATTS/TYPE	FT24W	FT36W	FT40W	T5CR55W	* F32T8	* F60T8HO	*CFT18W	F15T8
LAMPS OPERATED	1				1	1	2	1
INPUT WATTS	24	31	41	53	38	61	27	18
LINE CURRENT:	0.22	0.28	0.37	0.47	0.34	0.54	0.25	0.16
POWER FACTOR	0.91	0.92	0.93	0.93	0.93	0.94	0.92	0.91
BALLAST FACTOR	1.00	0.81	0.89	1.33	1.40	1.14	0.72	1.18
EFFICACY FACTOR	4.12	2.65	2.16	2.50	3.69	1.87	2.67	6.56
THD	41%	40%	37%	36%	36%	34%	40%	42%
EMI/RFI COMPLIANCE	FCC PART 18-A (Non-Consumer)							
SOUND RATING	" A "							
BALLAST TYPE	INSTANT START							
VOLTAGE TRANSIENTS	ANSI 62.41							
INPUT/PROTECTION	FUSE							
MIN. OPERATING TEMP	-30 °C (-20 °F)							
MAX. CASE TEMP	70 °C (158 °F)							
APPROVALS/CLASS	UL LISTED, CLASS " P ", 1 OR 2 OUTDOOR							
APPROVALS/CLASS	* UL /cUL LISTED, CLASS " P ", 1 OR 2 OUTDOOR							

MECHANICAL DATA



Where : L = Length, W = Width, H = Height

WIRING DIAGRAMS

WIRE	BLACK	WHITE	RED	BLUE	YELLOW	BROWN
LENGTH - INCHES	12 ± 1"	12 ± 1"	12 ± 1"	-	12 ± 1"	-

FOR WIRING DIAGRAM,
PLEASE REFER TO FULHAM'S CATALOG

NOTE : This Ballast Must Be Grounded

Fulham extends a limited warranty only to the original purchaser or to the first user for a period of 5 years from the date of manufacture when properly installed and operated under normal conditions of use. For complete terms and conditions, please reference the Fulham product catalog (www.fulham.com) Due to a program of continuous improvement, Fulham reserves the right to make modifications or variations in design or construction to the equipment described. © Fulham Company Limited, All Rights Reserved.

This Is An Original Product From Fulham Co., Inc

**Description : WorkHorse Series Versatile, Solid State Electronic Ballast.
High Power Factor, Light Weight.**

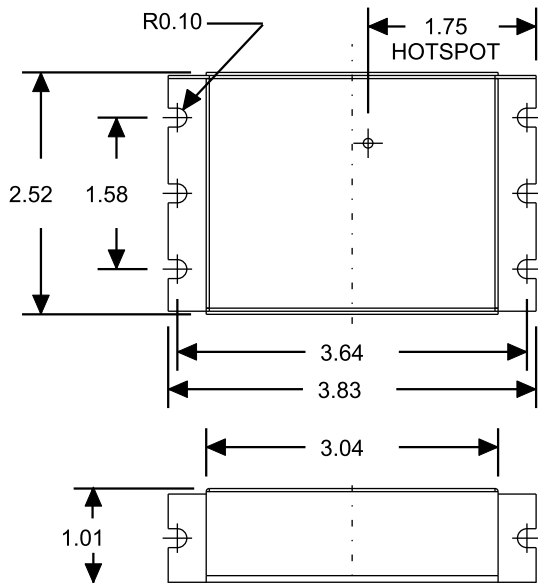
This Ballast Will Operate Following Lamps.

REFER TO LAMP WATTS/TYPE

ELECTRICAL DATA

INPUT VOLT: 120V ± 10%, 50/60Hz								
LAMP WATTS/TYPE	* F17T8	* F17T8	* F32T8	* F32T8	* CR40WT9	F24T5HO	F42T6	* F72T8HO
LAMPS OPERATED	2	1	1	2	1	2	2	1
INPUT WATTS	33	21	38	61	36	40	61	73
LINE CURRENT:	0.30	0.19	0.34	0.54	0.32	0.36	0.54	0.65
POWER FACTOR	0.93	0.92	0.93	0.94	0.93	0.94	0.94	0.94
BALLAST FACTOR	1.13	1.48	1.40	1.06	0.81	0.73	0.97	1.05
EFFICACY FACTOR	3.43	7.05	3.69	1.74	2.25	1.82	1.59	1.43
THD	37%	40%	36%	33%	37%	36%	33%	32%
EMI/RFI COMPLIANCE	FCC PART 18-A (Non-Consumer)							
SOUND RATING	" A "							
BALLAST TYPE	INSTANT START							
VOLTAGE TRANSIENTS	ANSI 62.41							
INPUT/PROTECTION	FUZE							
MIN. OPERATING TEMP	-30 °C (-20 °F)							
MAX. CASE TEMP	70 °C (158 °F)							
APPROVALS/CLASS	UL LISTED, CLASS " P ", 1 OR 2 OUTDOOR							
APPROVALS/CLASS	* UL /cUL LISTED, CLASS " P ", 1 OR 2 OUTDOOR							

MECHANICAL DATA



Where : L = Length, W = Width, H = Height

WIRING DIAGRAMS

WIRE	BLACK	WHITE	RED	BLUE	YELLOW	BROWN
LENGTH - INCHES	12 ± 1"	12 ± 1"	12 ± 1"	-	12 ± 1"	-

FOR WIRING DIAGRAM,
PLEASE REFER TO FULHAM'S CATALOG

NOTE : This Ballast Must Be Grounded

This Is An Original Product From Fulham Co., Inc

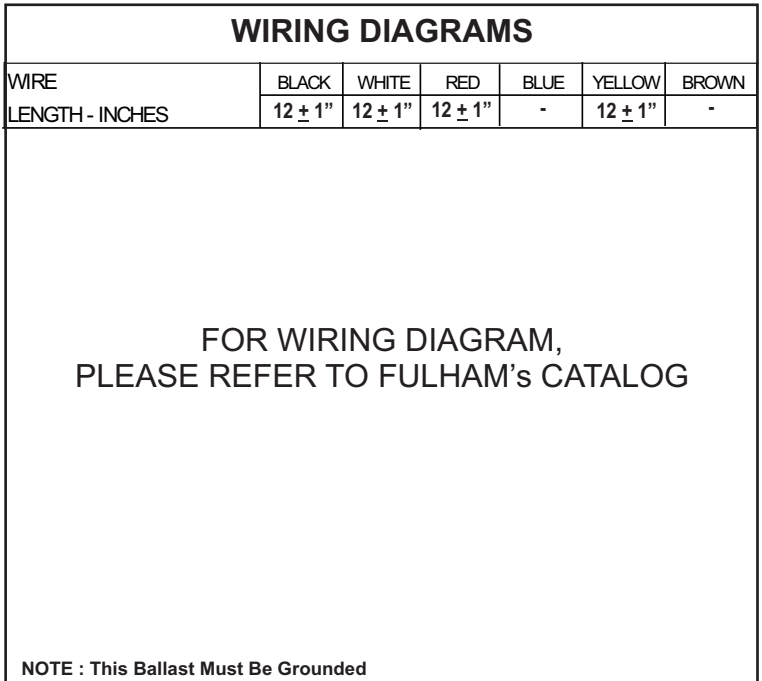
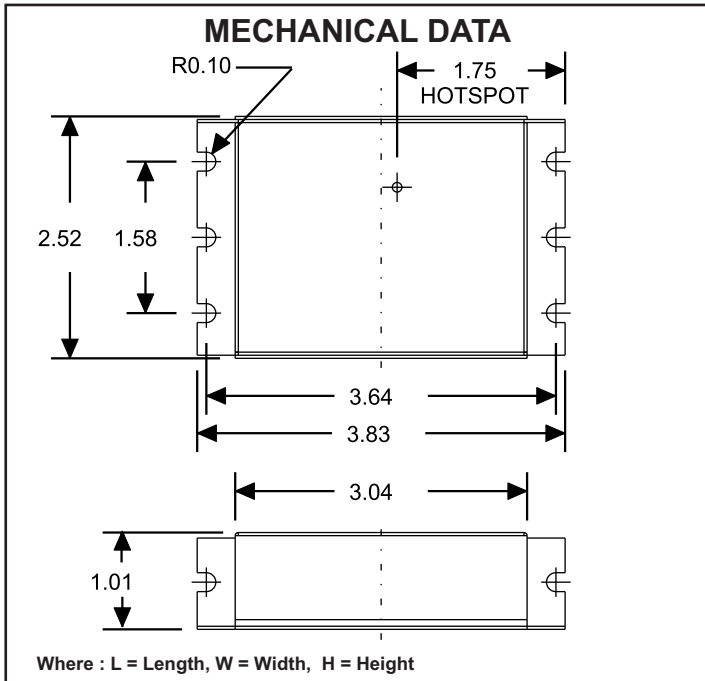
**Description : WorkHorse Series Versatile, Solid State Electronic Ballast.
High Power Factor, Light Weight.**

This Ballast Will Operate Following Lamps.

REFER TO LAMP WATTS/TYPE

ELECTRICAL DATA

INPUT VOLT: 120V ± 10%, 50/60Hz								
LAMP WATTS/TYPE	F39T5HO	* F20T12	F24T5HO	CFTR32W	2D38	F25T8	CFTR26W	CFQ26W
LAMPS OPERATED	1	2	2	1	1	1	1	1
INPUT WATTS	38	30	40	34	29	30	27	29
LINE CURRENT:	0.34	0.27	0.35	0.30	0.26	0.27	0.24	0.27
POWER FACTOR	0.93	0.93	0.93	0.93	0.93	0.93	0.92	0.92
BALLAST FACTOR	0.88	0.94	0.79	0.96	0.86	1.44	1.02	1.01
EFFICACY FACTOR	2.31	3.13	1.98	2.85	2.96	4.88	3.79	3.47
THD	37%	38%	37%	38%	41%	39%	41%	42%
EMI/RFI COMPLIANCE	FCC PART 18-A (Non-Consumer)							
SOUND RATING	" A "							
BALLAST TYPE	INSTANT START							
VOLTAGE TRANSIENTS	ANSI 62.41							
INPUT/PROTECTION	FUSE							
MIN. OPERATING TEMP	-30 °C (-20 °F)							
MAX. CASE TEMP	70 °C (158 °F)							
APPROVALS/CLASS	UL LISTED, CLASS " P ", 1 OR 2 OUTDOOR							
APPROVALS/CLASS	* UL /cUL LISTED, CLASS " P ", 1 OR 2 OUTDOOR							



Fulham extends a limited warranty only to the original purchaser or to the first user for a period of 5 years from the date of manufacture when properly installed and operated under normal conditions of use. For complete terms and conditions, please reference the Fulham product catalog (www.fulham.com)
Due to a program of continuous improvement, Fulham reserves the right to make modifications or variations in design or construction to the equipment described. © Fulham Company Limited, All Rights Reserved.