

Description:

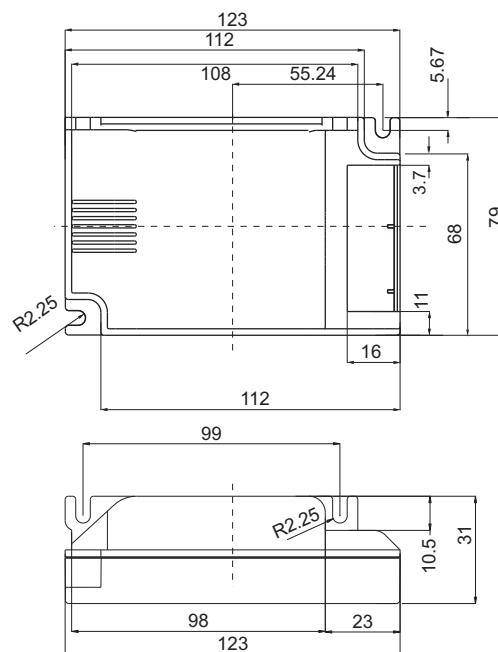
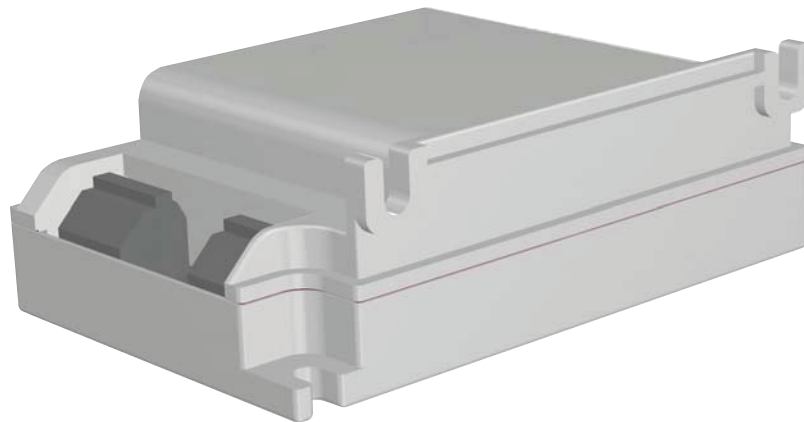
RaceHorse 230V Series, Electronic Ballasts, Programmed Preheat-Start, Cut-Off Technology, Thermal Protection, End-Of-Life (EOL) Protection, High Power Factor due to Active Power Factor Control (APFC) Technology.

RaceHorse 230V Serie, Elektronische Vorschaltgeräte (EVG), Programmierter Warm-Start, Cut-Off Technologie, Wärmeschutz, Sicherheitsabschaltung bei defekten Lampen, hoher Leistungsfaktor durch APFC- Technologie.

This Ballast Will Operate Following Lamps:

Please refer to Lamp List

Mechanical Data:



Fulham Company extends limited warranty only to the original purchaser or to the first user for the period of **5 years** from the date of manufacture as indicated by the date code stamped on each product and when properly installed and under normal conditions of use.

DUE TO A PROGRAM OF CONTINUOUS IMPROVEMENT, FULHAM Co., INC RESERVES THE RIGHT TO MAKE ANY VARIATION IN DESIGN OR CONSTRUCTION TO THE EQUIPMENT DESCRIBED.

Fulham Co., Inc. Address: 12705 South Van Ness Ave., Hawthorne, CA 90250 **Tel.:** 1-323-599-5000 **Fax.:** 1-323-754-9060 **Website:** www.fulham.com

2008-1007

Fulham Company GmbH Adresse: Karolinenstrasse 18, D-58507 Lüdenscheid, Germany **Fon:** +49 2351 4327416 **Fax:** +49 2351 6567349 **Handelsregister Iserlohn:** HR B 6286

Electrical Data:

| | | |
|--|---|--|
| Input Voltage [V] | Versorgungsspannung [V] | 220 - 240 |
| Power Line Frequency [Hz] | Netzfrequenz [Hz] | 50 / 60 |
| Input Voltage Range [V] | Wechsel-/Eingangsspannungsbereich [V] | (-10%) 198 - 264 (+10%) |
| DC-Voltage Range [V] | Gleichspannungsbereich [V] | 176 - 280 |
| Overvoltage Consistency [V AC, 1h] | Überspannungsfestigkeit [V AC, 1h] | 320 |
| Maximum Line Current [A] | Max. Leitungsstrom [A] | a) - e): 0.125, 0.125, 0.095, 0.084, 0.129 |
| Input Wattage (Lamp+Ballast) [W] | Systemleistung (Lampe+EVG) [W] | a) - e): 28.5; 28.5; 21.0; 18.0; 29.0 |
| Input Power Factor (PF) [λ] | (Eingangs-) LeistungsFaktor [λ] | a) - e): 0.97; 0.97; 0.97; 0.97; 0.97 |
| Line Current Harmonics (THD) [%] | Korrigierte Netzstromüberschwingungen [%] | 10 |
| Lamp Designation System | Lampenbezeichnungssystem | ZVEI - LBS |
| a) Numbers / Lamp Types Operated | a) Lampen: Anzahl / Name / Leistung | 2 x TC-DEL 13 W |
| b) Numbers / Lamp Types Operated | b) Lampen: Anzahl / Name / Leistung | 2 x TC-TEL 13 W |
| c) Numbers / Lamp Types Operated | c) Lampen: Anzahl / Name / Leistung | 2 x TC-DEL 10 W |
| d) Numbers / Lamp Types Operated | d) Lampen: Anzahl / Name / Leistung | 2 x TC-SEL 9 W |
| e) Numbers / Lamp Types Operated | e) Lampen: Anzahl / Name / Leistung | 2 x TC-SEL 11 W |
| Dimmable | Dimmbar | <input type="checkbox"/> Yes <input checked="" type="checkbox"/> No |
| Lamp Operating Frequency [KHz] | Lampenbetriebsfrequenz [kHz] | > 40 |
| Ignition Method (PH, RS or IS) | Startmechanismus | <input checked="" type="checkbox"/> PH <input type="checkbox"/> RS <input type="checkbox"/> IS |
| Preheat Time [S] | Vorheizzeit [S] | 0.4 < PT < 1.5 |
| Automatic restart after lamp change | Autom. Wiederstart nach Lampenwechsel | <input checked="" type="checkbox"/> Yes <input type="checkbox"/> No |
| Thermal Protection (EN 61347-2-3) | Wärmeschutz (EN 61347-2-3) | <input checked="" type="checkbox"/> Yes <input type="checkbox"/> No |
| End Of Life (EOL) Protection | Sicherheitsabschaltung bei Lampendefekt | <input checked="" type="checkbox"/> Yes <input type="checkbox"/> No |
| Suitable for luminaires with protection class | Schutzklasse der Leuchten | <input checked="" type="checkbox"/> I <input checked="" type="checkbox"/> II |
| Master Carton Quantity | Menge im Masterkarton | 50 |
| Label | Eikettengestaltung | <input checked="" type="checkbox"/> Fulham <input type="checkbox"/> Private |
| Weight [gr] | Gewicht [gr] | 170 |
| Weight of the Carton [gr] | Gewicht des Versandkartons [gr] | 9,800 |
| Case Dimensions-Length with Mount [mm] | Gehäusemass - Gesamt [mm] | L 123 |
| Case Dimensions-Length w/o Mount [mm] | Gehäusemass - Befestigungsabstand [mm] | L 123 |
| Case Dimensions-Length betw. mounting holes [mm] | Gehäusemass - Abstand Befestigungslöcher [mm] | L 129.5 (diagonal) |
| Case Dimensions-Width [mm] | Gehäusemass - Breite [mm] | W 79 |
| Case Dimensions-Height [mm] | Gehäusemass - Höhe [mm] | H 31 |
| Case Material | Gehäusematerial | Thermoplast (inflammable) |
| Primary strip length [mm] | Abisolierlänge Primärseitig [mm] | Min. 8,5 ... Max. 9,5 |
| Secondary strip length [mm] | Abisolierlänge Sekundärseitig [mm] | Min. 8,5 ... Max. 9,5 |
| Permissible cable lengths --- Hot wires [m] | Gestattete Leitungslänge - Hot [m] | 1 |
| Permissible cable lengths --- Cold wires [m] | Gestattete Leitungslänge - Cold [m] | 2 |
| EEL Classification | EEL Klassifizierung | EEL = A2 |
| CE (with compliance RoHS) | CE (mit RoHS Tauglichkeit) | EN 61347-2-3 |
| EMC Immunity | Immunität | EN 61547 |
| Harmonic Content | Oberwellengehalt | IEC / EN 61000-3-2 |
| Radio Interference Suppression | Funkentstörung | DIN VDE 0875 / EN 55015 |
| Performance ENEC | ENEC Prüfzeichen | IEC 60929 |
| Approval Mark | Prüfzeichen | ENEC, VDE, EMV (VDE-Germany) |
| Max. Case Hot Spot Temperature [°C] | Zulässige Gehäusetemperatur tc [°C] | +70 |
| Max. Case Temperature in case of Failure [°C] | Max. Gehäusetemperatur im Fehlerfall [°C] | + 110 |
| Min. Ambient Temperature [°C] | Min. Umgebungstemperatur ta [°C] | - 25 |
| Max. Ambient Temperature [°C] | Max. Umgebungstemperatur ta [°C] | + 60 |
| Min. Storage Temperature [°C] | Min. Lagerungstemperatur [°C] | - 40 |
| Max. Storage Temperature [°C] | Max. Lagerungstemperatur [°C] | + 85 |



Fulham Company extends limited warranty only to the original purchaser or to the first user for the period of **5 years** from the date of manufacture as indicated by the date code stamped on each product and when properly installed and under normal conditions of use.

DUE TO A PROGRAM OF CONTINUOUS IMPROVEMENT, FULHAM Co., INC RESERVES THE RIGHT TO MAKE ANY VARIATION IN DESIGN OR CONSTRUCTION TO THE EQUIPMENT DESCRIBED.

Fulham Co., Inc. Address: 12705 South Van Ness Ave., Hawthorne, CA 90250 Tel.: 1-323-599-5000 Fax.: 1-323-754-9060 Website: www.fulham.com

2008-1008

Fulham Company GmbH Adresse: Karolinenstrasse 18, D-58507 Lüdenscheid, Germany Fon: +49 2351 4327416 Fax: +49 2351 6567349 Handelsregister Iserlohn: HR B 6286