

SPECIFICATION SHEET : WHSG9 MLT T12 RS

This Is An Original Product From Fulham Electronic Co., Ltd

Description : WORKHORSE Specifier Grade Series Electronic Ballast, Drop In Replacement for Magnetic Ballast, Parallel Lamp Operation, THD Less Than 10%

This Ballast Will Operate Following Lamps.

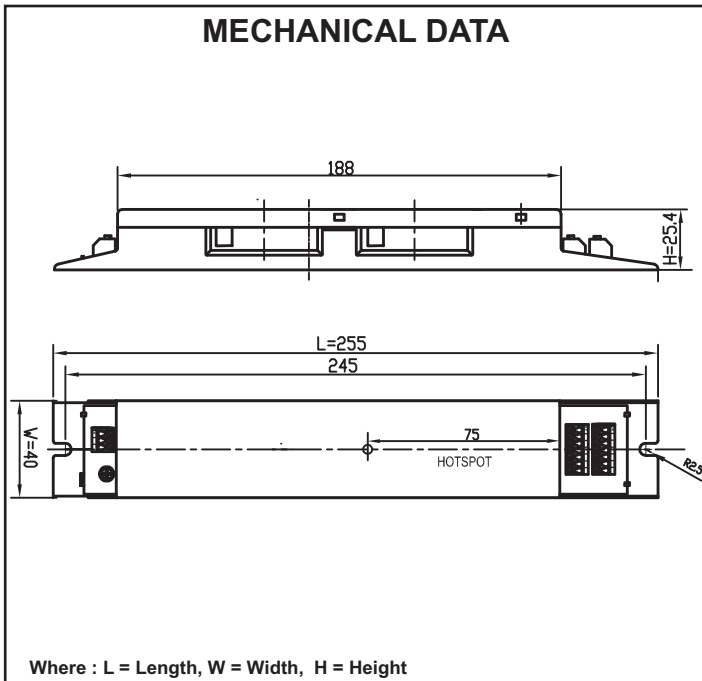


F18T8 / F20T12 / F36T8 / F40T12

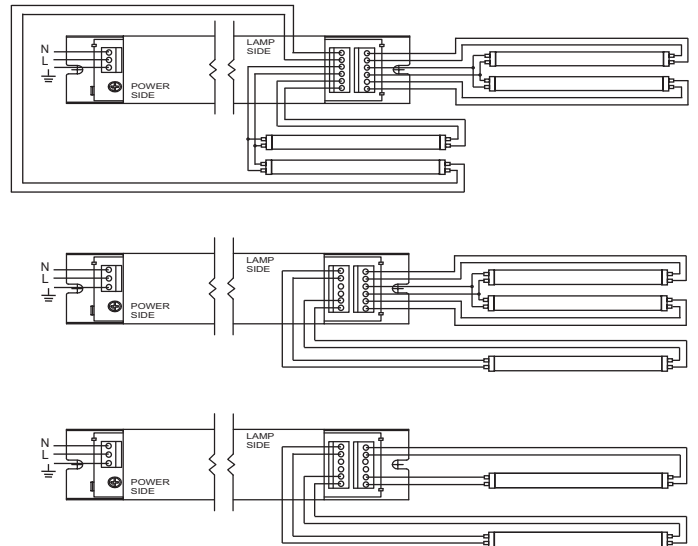
ELECTRICAL DATA (With 120 Volt Application)

INPUT VOLT: 120V/240V , 50/60Hz							
LAMP WATTS/TYPE	F18 T8	F20T12	F36 T8	F40T12	F18 T8	F20T12	-
LAMPS OPERATED	4		2		3		
INPUT WATTS	69.24W	69.33W	56.21W	59.19W	58.12W	-	-
LINE CURRENT	0.574A	0.576A	0.485A	0.494A	0.483A	-	-
POWER FACTOR	>0.95						
BALLAST FACTOR	0.9						
EFFICACY FACTOR	>88%						
THD	<10%						
CURRENT CREST FACTOR	< 1.7						
EMI/RFI COMPLIANCE	FCC PART 18-A (None Consumer)						
SOUND RATING	" A "						
BALLAST TYPE	RAPID START						
VOLTAGE TRANSIENTS	ANSI 62.41						
INPUT/PROTECTION	FUSE						
OUTPUT/PROTECTION	EOL						
MIN. OPERATING TEMP	- 10 °C (14 ° F)						
MAX. CASE TEMP	75 °C (167 ° F)						
ENERGY STAR 4.0	-						
APPROVALS/CLASS	UL LISTED, CLASS " P ", 1 OUTDOOR						

MECHANICAL DATA



WIRING DIAGRAMS



NOTE : This Ballast Must Be Grounded

Fulham Electronic Co., Ltd extends limited warranty only to the original purchaser or to the first user for the period of 3 years from the date of manufacture when properly installed and under normal conditions of use.

DUE TO A PROGRAM OF CONTINUOUS IMPROVEMENT, FULHAM ELECTRONIC Co.,LTD RESERVES THE RIGHT TO MAKE ANY VARIATION IN DESIGN OR CONSTRUCTION TO THE EQUIPMENT DESCRIBED.

Address : Unit 2617 Miramar Tower 132 Nathan Road, T S T .Kowloon Hong Kong Tel.:852 2314 4801, Fax.: 852 2314 4186

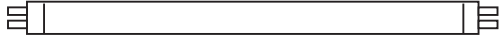
Website www.fulham.com

SPECIFICATION SHEET : WHSG9 MLT T12 RS

This Is An Original Product From Fulham Electronic Co., Ltd

Description : WORKHORSE Specifier Grade Series Electronic Ballast, Drop In Replacement for Magnetic Ballast, Parallel Lamp Operation, THD Less Than 10%

This Ballast Will Operate Following Lamps.

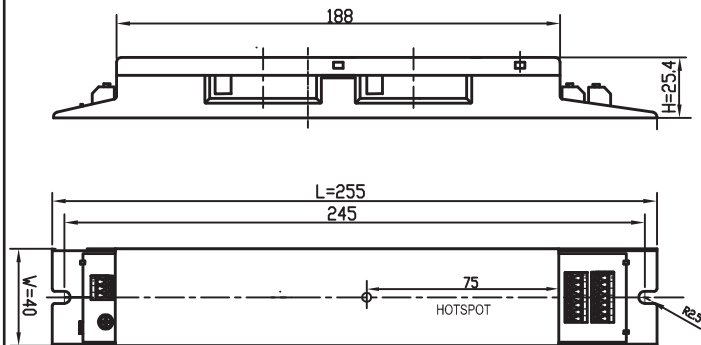


F18T8 / F20T12 / F36T8 / F40T12

ELECTRICAL DATA (With 240 Volt Application)

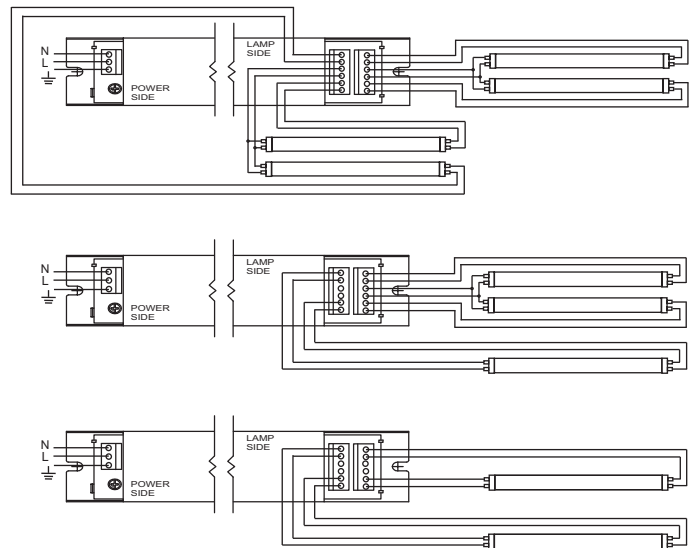
INPUT VOLT: 120V/240V , 50/60Hz							
LAMP WATTS/TYPE	F18 T8	F20T12	F36 T8	F40T12	F18 T8	F20T12	-
LAMPS OPERATED	4		2		3		
INPUT WATTS	67.78W	69.85W	57.30W	58.36W	57.61W	-	-
LINE CURRENT	0.307A	0.317A	0.262A	0.267A	0.261A	-	-
POWER FACTOR	>0.95						
BALLAST FACTOR	0.9						
EFFICACY FACTOR	>88%						
THD	<10%						
CURRENT CREST FACTOR	< 1.7						
EMI/RFI COMPLIANCE	FCC PART 18-A (None Consumer)						
SOUND RATING	" A "						
BALLAST TYPE	RAPID START						
VOLTAGE TRANSIENTS	ANSI 62.41						
INPUT/PROTECTION	FUSE						
OUTPUT/PROTECTION	EOL						
MIN. OPERATING TEMP	- 10 °C (14 ° F)						
MAX. CASE TEMP	75 °C (167 ° F)						
ENERGY STAR 4.0	-						
APPROVALS/CLASS	UL LISTED, CLASS " P ", 1 OUTDOOR						

MECHANICAL DATA



Where : L = Length, W = Width, H = Height

WIRING DIAGRAMS



NOTE : This Ballast Must Be Grounded

Fulham Electronic Co., Ltd extends limited warranty only to the original purchaser or to the first user for the period of 3 years from the date of manufacture when properly installed and under normal conditions of use.

DUE TO A PROGRAM OF CONTINUOUS IMPROVEMENT, FULHAM ELECTRONIC Co.,LTD RESERVES THE RIGHT TO MAKE ANY VARIATION IN DESIGN OR CONSTRUCTION TO THE EQUIPMENT DESCRIBED.

Address : Unit 2617 Miramar Tower 132 Nathan Road, T S T .Kowloon Hong Kong Tel.:852 2314 4801, Fax.: 852 2314 4186

Website www.fulham.com