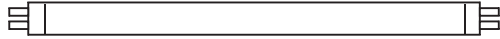


SPECIFICATION SHEET : WHSG9-220-T12-RS

This Is An Original Product From Fulham Electronic Co., Ltd

Description : WORKHORSE Specifier Grade Series Electronic Ballast, Drop In Replacement for Magnetic Ballast, Parallel Lamp Operation, THD Less Than 10%

This Ballast Will Operate Following Lamps.

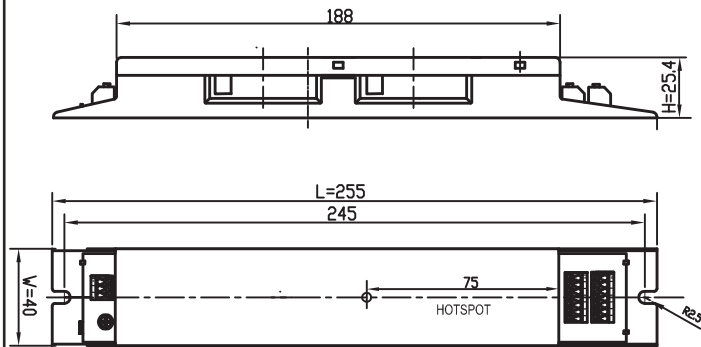


F18T8 / F20T12 / F36T8 / F40T12

ELECTRICAL DATA

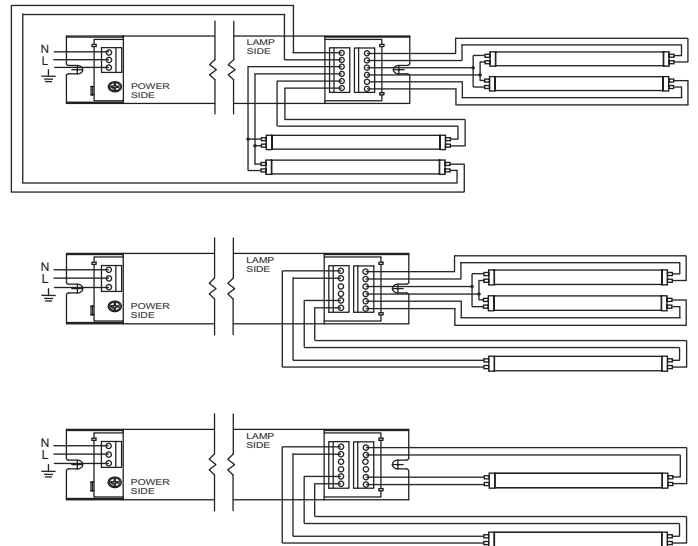
INPUT VOLT: 220V ± 10%, 50/60Hz								
LAMP WATTS/TYPE	F18 T8	F20 T12	F18 T8	F18T8	F20T12	F36TE	F40T12	
LAMPS OPERATED	4	4	2	3	3	2	2	
INPUT WATTS	72W	74W	42W	-	-	-	-	
MAX. LINE CURRENT	0.325A	0.335A	0.191A	-	-	-	-	
POWER FACTOR	>0.95							
BALLAST FACTOR	0.92							
EFFICACY FACTOR	>88%							
THD	<10%							
CURRENT CREST FACTOR	< 1.7							
EMI/RFI COMPLIANCE	-							
SOUND RATING	-							
BALLAST TYPE	RAPID START							
VOLTAGE TRANSIENTS	-							
INPUT/PROTECTION	FUUSE							
OUTPUT/PROTECTION	EOL							
MIN. OPERATING TEMP	- 10 °C (14 ° F)							
MAX. CASE TEMP	75 °C (167 ° F)							
ENERGY STAR 4.0	-							
APPROVALS/CLASS	UL LISTED, CLASS " P ", 1 OUTDOOR							

MECHANICAL DATA



Where : L = Length, W = Width, H = Height

WIRING DIAGRAMS



NOTE : This Ballast Must Be Grounded

Fulham Electronic Co., Ltd extends limited warranty only to the original purchaser or to the first user for the period of 3 years from the date of manufacture when properly installed and under normal conditions of use.

DUE TO A PROGRAM OF CONTINUOUS IMPROVEMENT, FULHAM ELECTRONIC Co.,LTD RESERVES THE RIGHT TO MAKE ANY VARIATION IN DESIGN OR CONSTRUCTION TO THE EQUIPMENT DESCRIBED.

Address : 12705 South Van Ness Ave. , Hawthorne CA 90250, U. S. A Tel.:323-599-5001 Website: www.fulham.com