

Description: 18 W Linear LED Module / 560X20mm / 48LEDs / S6 P8

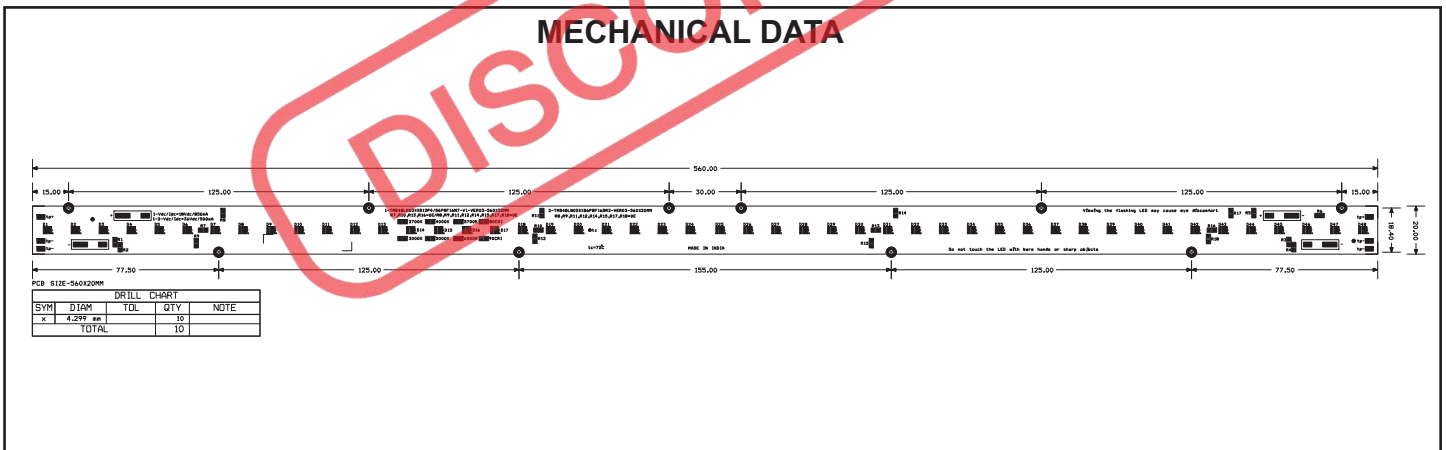
This LED Module Should be Operated On:

Any LED Driver designed to Provide output Current of 500mA and Voltage 36Vdc

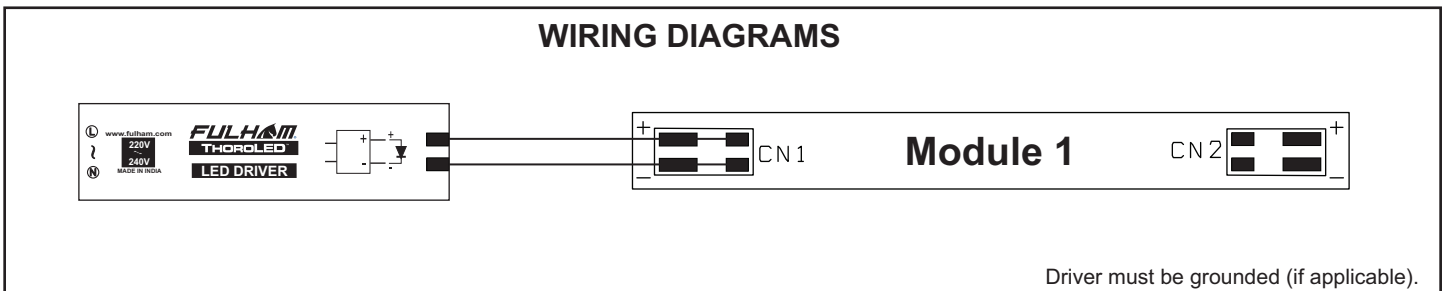
ELECTRICAL DATA

NOMINAL INPUT VOLTAGE (V _{DC})	36
NOMINAL INPUT CURRENT (mA)	500
NOMINAL POWER CONSUMPTION(W)	18
PCB SIZE (mm)	LINEAR 560 x 20MM
PCB MATERIAL TYPE	FR-4
CCT	6500K / 5700K / 4000K
CALCULATED USABLE ARRAY FLUX (lm)	2600 / 2600 / 2600
RECOMMENDED ATTACHMENT METHOD	M3 Pan Head Screw
WEIGHT (gm)	50
MAXIMUM STORAGE TEMPERATURE (°C)	-40 to 100
MAXIMUM OPERATING AMBIENT TEMPERATURE (°C)	-40 to 50
MAXIMUM T _c (°C)	75
BEAM ANGLE	120°
CRI (Typ)	80

MECHANICAL DATA



WIRING DIAGRAMS



Fulham extends a limited warranty only to the original purchaser or to the first user for a period of 3 years from the date of manufacture when properly installed and operated under normal conditions of use. For complete terms and conditions, please reference the Fulham product catalog (www.fulham.com)
Due to a program of continuous improvement, Fulham reserves the right to make modifications or variations in design or construction to the equipment described. © Fulham Company Limited, All Rights Reserved.