

**Description:** 84W Rectangle LED Module / 194X234MM / 40LEDs / S40 P1

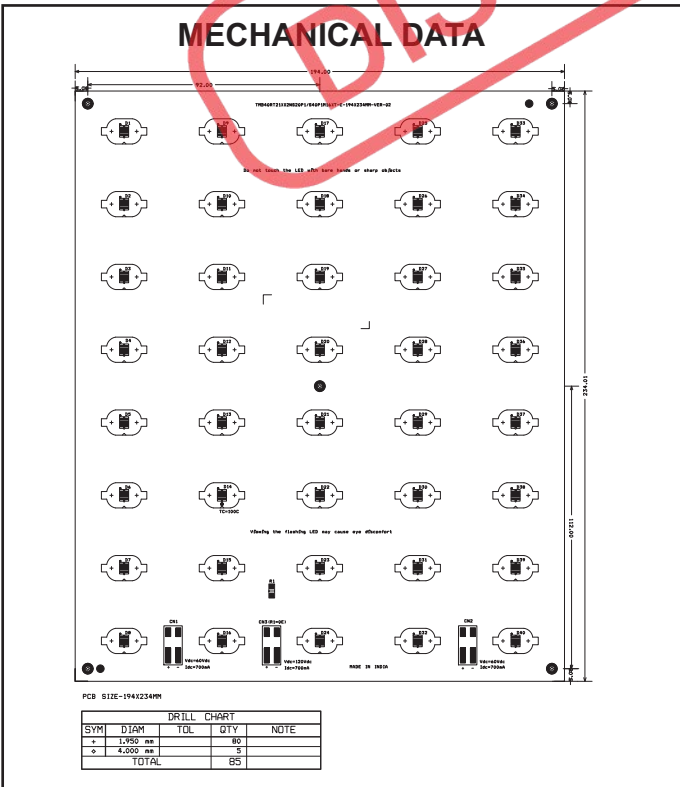
**This LED Module Should be Operated On:**

Any LED Driver designed to Provide output Current of 700mA and Voltage 120Vdc

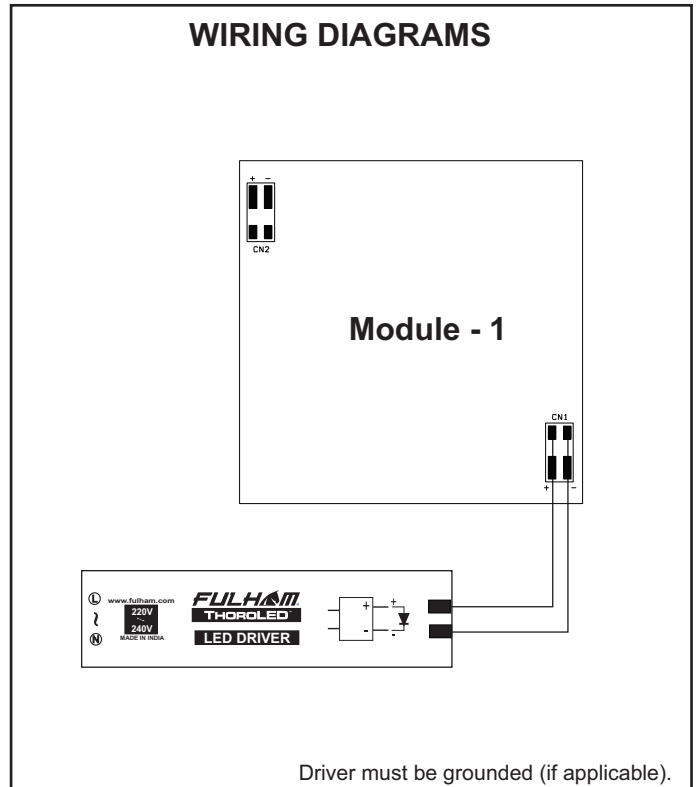
**ELECTRICAL DATA**

NOMINAL INPUT VOLTAGE (V <sub>DC</sub> )	120
NOMINAL INPUT CURRENT (mA)	700
NOMINAL POWER CONSUMPTION(W)	84
PCB SIZE (mm)	RECTANGLE 194 x 234MM
PCB MATERIAL TYPE	MCPCB
CCT	5700K
CALCULATED USABLE ARRAY FLUX (lm)	9870
RECOMMENDED ATTACHMENT METHOD	M3 Pan Head Screw
WEIGHT (gm)	150
MAXIMUM STORAGE TEMPERATURE (°C)	-40 to 100
MAXIMUM OPERATING AMBIENT TEMPERATURE (°C)	-35 to 50
MAXIMUM T <sub>c</sub> (°C)	100
BEAM ANGLE	120°
CRI (Typ)	80

**MECHANICAL DATA**



**WIRING DIAGRAMS**



Fulham extends a limited warranty only to the original purchaser or to the first user for a period of 3 years from the date of manufacture when properly installed and operated under normal conditions of use. For complete terms and conditions, please reference the Fulham product catalog ([www.fulham.com](http://www.fulham.com))  
**Due to a program of continuous improvement, Fulham reserves the right to make modifications or variations in design or construction to the equipment described. © Fulham Company Limited, All Rights Reserved.**