

City of Chicago Approved Exit Lighting & Signage



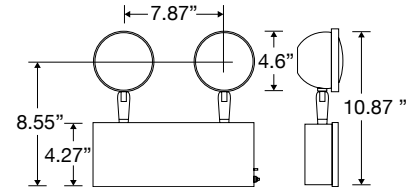
- Designed to strict Chicago specifications
- Adjustable lamp heads for high-lumen emergency illumination
- Heavy duty, 20-gauge steel construction for extreme durability
- Easy to install, very low maintenance
- Indoor / Damp location rated

When the lights go out, people don't think about lighting technology — they just want to get to safety. Fulham's Chicago-approved exit signs and emergency lights are engineered to provide reliable performance when you need them most.



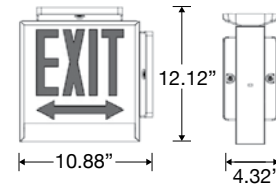
| FHCH10 | |
|--------------|---|
| Model Number | Description |
| FHCH10 | 6V, 24W, sealed lead acid battery, two lamp heads |

Steel emergency light designed for new construction or retrofit applications. Two fully adjustable heads, push-to-test button, and universal mounting pattern knockout. Ideal for wall-mounted applications in stores, offices, hospitals and schools.



| FHCH21 | | | |
|---|------------------------|--|--------------------------------------|
| Series | # of Faces | Directional | Operation |
| FHCH21 | S = Single D = Dual | NA = No Arrow DA = Double Arrow LA = Left Arrow RA = Right Arrow | AC = AC Only EM = Battery Back Up |
| Additional/Replacement Faceplates | | | |
| FHCHGONA = No Arrow FHCHGORA = Right Arrow FHCHGOLA = Left Arrow FHCHGODA = Double Arrow | | FHCHGOST = Stairs FHCHGOSTRA = Stairs Right Arrow FHCHGOSTLA = Stairs Left Arrow | |

Heavy duty, 20-gauge steel exit sign. Heat tempered, impact resistant glass lens. Multiple faceplate options. Ideal for ceiling- or wall-mounted applications in schools, offices, retail and hospitals.



• **Sample model number**

FHCH21SLAAC: FHCH21 exit sign, single face with left arrow, AC operation only

FULHAM www.fulham.com

North America • China • Europe • India • Latin America

Fulham Headquarters: 12705 S. Van Ness Avenue, Hawthorne, CA 90250 Tel: +1 (323) 599-5000 Fax: +1 (323) 754-9060 • order@fulham.com

All trademarks are the property of their respective owners | ©Fulham Co. Inc., 2018 | REV: NOV18