

Description: 9.90 W Linear LED Module / 585X15mm / 44LEDs / S11 P4

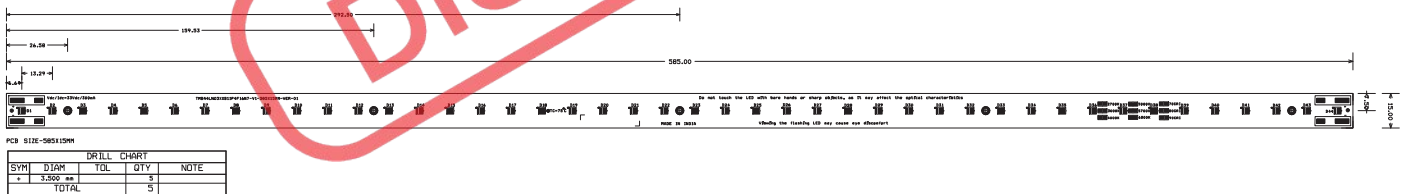
This LED Module Should be Operated On:

Any LED Driver designed to Provide output Current of 300mA and Voltage 33Vdc

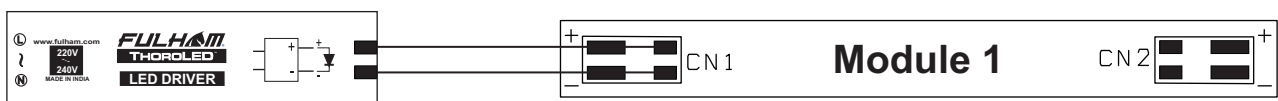
ELECTRICAL DATA

NOMINAL INPUT VOLTAGE (V _{DC})	33
NOMINAL INPUT CURRENT (mA)	300
NOMINAL POWER CONSUMPTION(W)	9.90
PCB SIZE (mm)	LINEAR 585 x 15MM
PCB MATERIAL TYPE	FR-4
CCT	5700K / 4000K / 2700K
CALCULATED USABLE ARRAY FLUX (lm)	1500 / 1470 / 1280
RECOMMENDED ATTACHMENT METHOD	M3 Pan Head Screw
WEIGHT (gm)	60
MAXIMUM STORAGE TEMPERATURE (°C)	-40 to 100
MAXIMUM OPERATING AMBIENT TEMPERATURE (°C)	-35 to 50
MAXIMUM T _c (°C)	75
BEAM ANGLE	115°
CRI (Typ)	80

MECHANICAL DATA



WIRING DIAGRAMS



Driver must be grounded (if applicable).

Fulham extends a limited warranty only to the original purchaser or to the first user for a period of 3 years from the date of manufacture when properly installed and operated under normal conditions of use. For complete terms and conditions, please reference the Fulham product catalog (www.fulham.com)
Due to a program of continuous improvement, Fulham reserves the right to make modifications or variations in design or construction to the equipment described. © Fulham Company Limited, All Rights Reserved.